

UNLOCK THE NEXT LEVEL OF PERFORMANCE WITH



&



SINCE 1907

Where precision meets power, the Chiesa TTM Belt Automatic Beam Cutting Press sets the new standard in die-cutting.

Engineered for maximum productivity, trusted by manufacturers worldwide, and backed by MSC's decades of converting expertise.

INFORMATION@MFGUP.COM

ENGINEERED FOR ACCURACY. POWERED FOR SPEED.

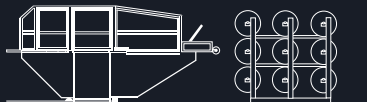
TTM model	WORKING TABLE mm	POWER †	DIMENSIONS H x W x D
1680 - 80	1600 x 800	80	2250 x 2750 x 4050
1680 - 100	1600 x 800	100	2250 x 2750 x 4050
1680 - 150	1600 x 800	150	2250 x 2750 x 4450
1610 - 100	1600 x 1000	100	2250 x 2750 x 4450
1610 - 150	1600 x 1000	150	2250 x 2750 x 4450
1611 - 100	1600 x 1100	100	2250 x 2750 x 4650
1611 - 150	1600 x 1100	150	2250 x 2750 x 4650
1612 - 100	1600 x 1200	100	2250 x 2750 x 4850
1612 - 150	1600 x 1200	150	2250 x 2750 x 4850
2080 - 100	2000 x 800	100	2250 x 3150 x 4050
2080 - 150	2000 x 800	150	2250 x 3150 x 4050
2080 - 200	2000 x 800	200	2250 x 3150 x 4050
2010 - 150	2000 x 1000	150	2250 x 3150 x 4450
2010 - 200	2000 x 1000	200	2250 x 3150 x 4450
2014 - 300	2000 x 1400	300	2250 x 3550 x 4450
2214 - 300	2200 x 1400	300	2450 x 3550 x 4450

Customized machinery with special dimensions available on request. Diagrams, overall dimensions, and weight data are not binding. We reserve the right to modify and change the machine features.

AUTOMATIC SHEET FEEDER



MULTI-ROLL MATERIAL HANDLING



MSC Contact:

CINCINNATI, OH

106 Commerce Drive
Cincinnati, OH 45140

(513) 677-3311

information@mfgsup.com

EARTH CITY, MO

4220 Rider Trail North
Earth City, MO 63045

(314) 770-0880

information@mfgsup.com

TECHNOLOGY THAT DRIVES ACCURACY

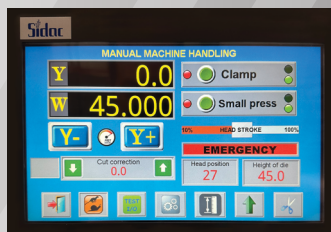


Feeding Clamps & Belt

Specifically designed for multi-layer materials. When combined with the cutting belt, it guarantees maximum accuracy and precision in material advancement.

Touch Screen Computer

Numerical control system developed to simplify all automation procedures. Manages settings for travel, cutting, speed, feeding, and advancement quotas, while providing complete real-time diagnostics of machine functions.



Hydraulic Tank

Installed separately from the machine for improved accessibility and ease of maintenance.

STRENGTH, SPEED, AND ACCURACY IN EVERY DETAIL

STRUCTURE & POWER

- **WORK TABLE**

Available in multiple sizes beyond the standard format to suit varied materials and production needs.

- **CUTTING PLATEN**

Configurable with different die-holder systems for fast, flexible cutting setups.

- **ROBUST MECHANICAL STRUCTURE**

Heavy-duty shoulders connected to dual hydraulic cylinders, guided by precision devices on the basement structure. Sliding surfaces use anti-friction, non-compressible materials for smooth, stable operation under maximum load.

- **AVAILABLE CUTTING POWER**

Cutting forces ranging from 80 to 300 tons, adaptable to material thickness and production requirements.

- **HYDRAULIC ACCUMULATORS**

Boost hydraulic response for faster ascent and descent, increasing overall productivity.

SAFETY & PRECISION

- **SYNCHRONIZATION BAR**

The heart of the system. Maintains synchronized cylinder movement, even with decentralized loads, ensuring smooth, accurate cutting across the entire work area.

- **MATERIAL FEEDING SYSTEM**

Specially engineered for multi-layer materials, the programmable clamp feeding system with cutting belt guarantees precise advancement and cutting accuracy. The Optional Movable Front Clamp System allows for the full utilization of sheets by controlling the feed after the cut.

- **PROTECTIONS**

Designed in full compliance with current CE safety standards.

- **HYDRAULIC TANK**

Mounted separately from the press body for easy access and maintenance.

AUTOMATION & CONTROL

- **TOUCH SCREEN COMPUTER**

Numerical control system simplifies automation. Operators can set travel, cutting, speed, feeding, and advancement quotas, while real-time diagnostics ensure reliability at all times.

- **CUTTING-DIE FASTENING**

Multiple fastening devices available, adaptable to specific production requirements.

- **CUTTING PAD OR STEEL PLATE**

Automatic pad-shifting device.

- **AUTOMATIC LUBRICATION**

Integrated system delivers consistent oiling to key components, reducing wear and extending service life.

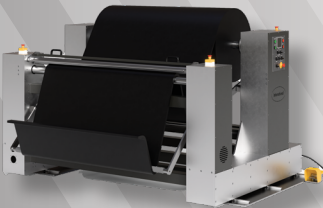
- **MECHANICAL BRAKE**

Electronic controlled positive head stops via brushless motors. Die height is entered & adjusted via the touch screen display.

SMARTER MATERIAL HANDLING. SEAMLESS PRODUCTION.

Seamless Material Handling for any workflow. MSC's unwind and sheet loading systems are built for precision, safety, and integration with your cutting or laminating lines.

KEY FEATURES



- **VERSATILE ROLL HANDLING**
Standard or custom designs for foams, laminates, textiles, composites, and more. Shafted or shaftless options available.
- **HEAVY DUTY CAPACITY**
Handles jumbo rolls up to 1500 kg or 3300 lbs with safe, efficient operation.
- **ADVANCED CONTROL**
Dynamic web tension systems with dancer arms, load cells, or ultrasonic sensors; optional automatic edge guiding.
- **FLEXIBLE INTEGRATION**
Works seamlessly with MSC cutters, die-cutting, laminating, or slitter-rewinder systems.
- **PRODUCTIVITY OPTIONS**
Multi-roll configurations, quick changeovers, and automatic splicing to minimize downtime.

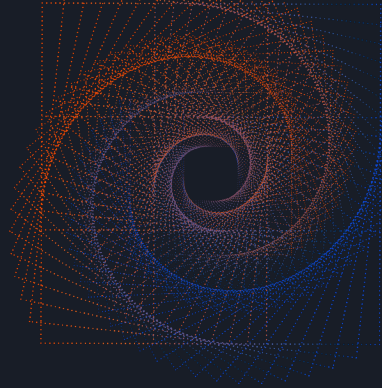
WHY IT MATTERS

- ✓ Greater uptime
- ✓ Precise tension & alignment
- ✓ Reduced waste
- ✓ Scalable for any production line

INNOVATION IN MOTION

About Manufacturer's Supplies Company

Precision cutting & converting systems designed to elevate your success. Proudly serving industries since 1907.



OUR GUIDING PRINCIPLES

At MSC, our core values drive everything we do—from pioneering innovation to building lasting partnerships. With a customer-centric mindset, deep expertise, and a family first culture, we deliver cutting-edge solutions that empower success.



INNOVATION AT OUR CORE

Innovation fuels everything we do, driving us to deliver cutting-edge, game-changing converting solutions.



PARTNERSHIP FOR SUCCESS

We're stronger together. By building lasting relationships with our clients and expert manufacturers, we craft solutions built on trust, teamwork, and shared success.



CUSTOMER-CENTRIC EXCELLENCE

Every solution is customized to unlock maximum value, turning your challenges into wins with precision and care.



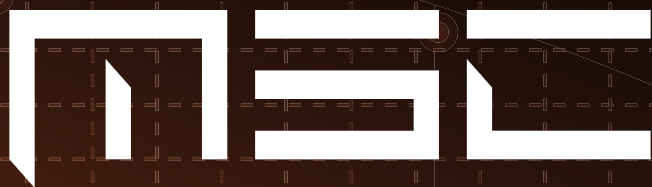
EXPERTISE THAT DRIVES BREAKTHROUGH SOLUTIONS

Our team fuses deep industry knowledge with solutions to tackle real-world challenges, fast and effectively.



FAMILY FIRST CULTURE

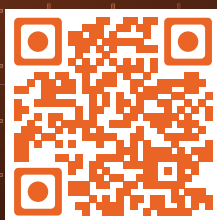
We believe in treating our team, partners, and clients like family—fostering a supportive, respectful environment where people and invention thrive together.



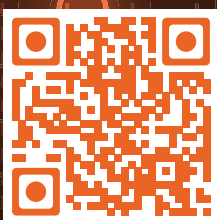
MANUFACTURERS
SUPPLIES COMPANY

SINCE 1907

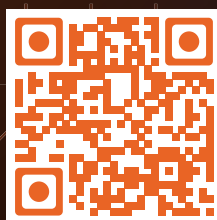
READY TO LEAD WITH PRECISION?



**CHECK OUT
OUR WEBSITE**



**CONNECT
WITH US**



**JOIN OUR
INSIDER LIST**